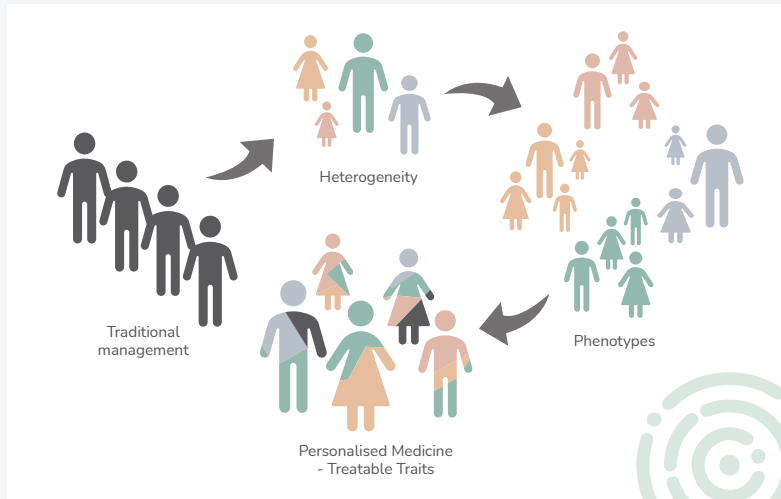


Airway Disease Heterogeneity

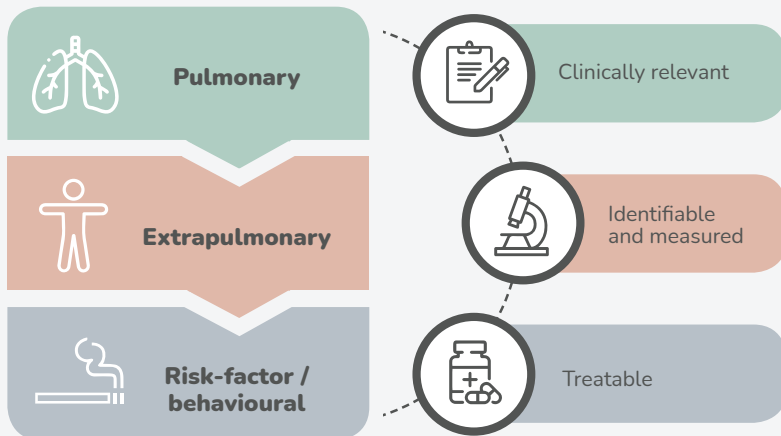
Not all asthma or COPD are the same

These conditions are complex and heterogeneous in terms of their associated traits and comorbidities

Personalised medicine can be used to address the heterogeneity within and between individuals



On average a person with severe asthma or COPD has greater than 10 different treatable traits



How does heterogeneity and complexity impact clinical care?

Every additional treatable trait is associated with health status impairment

People with airway diseases have many treatable traits, and each additional trait is associated with a clinically significant decrement in health status



Sources of Information

McDonald VM et al, Age Aging 2010
McDonald et al. ERJ 2020

@traitsCRE
 www.treatabletraits.org.au
 Treatabletraits@newcastle.edu.au

centre of excellence
treatable traits