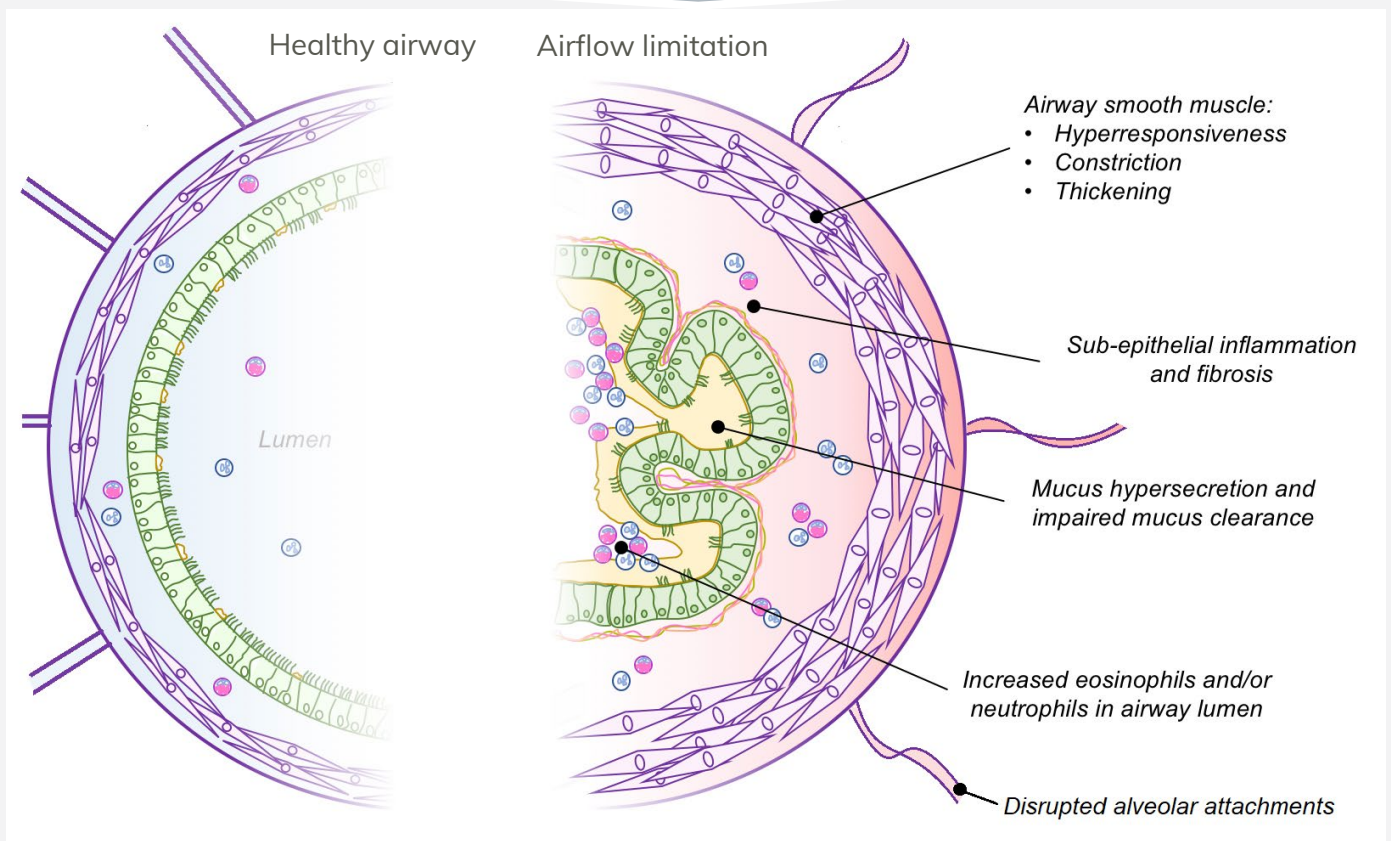


# Airflow Limitation

What is airflow limitation?

Airflow limitation means that the flow of air through the airways is impaired

The airways can become narrowed due to small airway disease and parenchymal destruction due to inflammatory processes



Content has been reproduced with permission from the Centre of Excellence in Severe Asthma, originally developed as part of the <https://toolkit.severeasthma.org.au>

The presence, level and severity of airflow limitation can be different for people with asthma and chronic obstructive pulmonary disease

Airflow limitation is associated with



Age



Disease duration



Airway Inflammation



Decline in health status

Treatment options



Bronchodilator medications



Risk factor modification



Endobronchial valves